

# 5th after Epiphany 8 FEBRUARY 2009

Following the God  
made known in the life  
and teachings of Jesus...

A free bird leaps  
on the back of the wind  
and floats downstream  
till the current ends  
and dips his wings in the orange sun  
rays  
and dares to claim the sky  
-Maya Angelou  
from "Caged Bird"



Ayako Araki, Migrating Birds

## Welcome and Announcements

Prelude 11am

Lisa Smith, flute

## Invocation

Help us to remember how you have empowered people  
to work for positive change in our world.

Grant us courage and a vision of the future

to affirm and defend the right to wholeness for all people.

Amen.

- hrc.org/scripture

## \*Hymn "O God of Love, of Healing and of Wholeness"

author: Deborah Patterson

Musical score for the hymn "O God of Love, of Healing and of Wholeness" in G major, 4/4 time. The score consists of ten staves of music with lyrics underneath. The lyrics are:

O God of love, of heal-ing and of whole-ness,  
O God, you nurse us when our hearts are bro-ken.  
O pa-tient God, we pray you send your Spir-it.

We look to you for guid-ance and for grace.  
You tend our wounds when we are filled with pain.  
Grant us the peace that comes from you a-lone.

You are our strength, our re-fuge and our strong-hold;  
You nour-ish us with bread and milk and all good things.  
Help us to use each tal-ent and our know-ledge.

We come to you for wis-dom's warm em-brace.  
And chal-lenge us to rise and sing a-gain.  
To care for strang-er, neigh-ber and our own.

You are our God, and God of ev-'ry na-tion,  
Let us be peo-ple of your own com-pas-sion.  
Keep pas-sion's fires glow-ing on our jour-ney.

Our prec-ious hope, the hope of all that live,  
Let us a-wak-en to the lost and lone.  
Re-new our call to fol-low you each day.

Our great-est bless-ing, source of all our my-ste-ry,  
And when the day is done, and all is fin-ish-ed.  
Lift up our hearts, and help us see you clear-ly,

You are the one who teach-es us how to for-give.  
Let us re-turn to you and know our rest is won.  
That we may serve you in the o-ther Lord we pray

## Welcome!

### A word about diversity:

We strive to be a safe place for all people to worship regardless of race, creed, age, cultural background, sexual orientation or gender identity.

### A word about children:

We love children, babies, and teens and we welcome all ages to share worship with us. Professional child-care is available throughout the morning for those who prefer. Activity folders (available in the Narthex) allow children of all ages to respond creatively to worship. A playtime for preschool age children is offered after the Chancel Steps at the 11:00 a.m. service.

### A word about special needs:

Signing our 11:00am service this morning is Kristine Pudlowski. Special seating is available as needed. We are happy to provide transportation to worship and special activities. Please let us know how we can help make this worship experience more accessible.

## \*Litany

One: Put your ear to the ground and listen:

Many: hurried, worried footsteps,  
bitterness, rebellion.

Hope hasn't yet begun.

One: Listen again. Put out feelers.  
The Lord is there.

Many: He is far less likely to abandon us  
in hardship than in times of ease.

- Don Helder Camara

## Scripture

Isaiah 40: 28-31

Have you not known? Have you not heard?

God does not faint or grow weary;  
her understanding is unsearchable.

He gives power to the faint, and strengthens the powerless.

Even youths will faint and be weary and the young will fall exhausted;

But those who wait for the Lord shall renew their strength,

They shall mount up with wings like eagles.

They shall run and not be weary, they shall walk and not faint.

Mark 1:29-39

As soon as they left the synagogue, they entered the house of Simon and Andrew, with James and John. Now Simon's mother-in-law was in bed with a fever, and they told him about her at once. He came and took her by the hand and lifted her up. Then the fever left her, and she began to serve them.

That evening, at sunset, they brought to him all who were sick or possessed with demons. And the whole city was gathered around the door. And he cured many who were sick with various diseases, and cast out many demons; and he would not permit the demons to speak, because they knew him.

## Chancel Steps

*Children are invited to come to the Chancel Steps to share a story.*

*Following the story, young children may choose  
to go to the nursery (both services)*

*or to Shepherds (11:00am—a play time in the Red Room downstairs).*

<b>Anthem</b>	8:30am	"El Shaddai" Folk Choir	Michael Card
	11:00am	Emmaus Choir Kristy May, Director	
<b>Sermon</b>		"Healing and Service"	Nancy Mack

\*An asterisk next to a section means that we stand for this part of the service as we are able.

**\*Hymn**

“On Eagle’s Wings” tune/words: Michael Joncas

You who dwell in the shelter of the Lord,  
Who abide in his shadow for life,  
Say to the Lord: “My refuge,  
My rock in whom I trust!”

*Refrain:*

And God will raise you up on eagle’s wings,  
Bear you on the breath of dawn,  
Make you to shine like the sun,  
And hold you in the palm of God’s hand.

*Refrain*

The snare of the fowler will never capture you,  
And famine will bring you no fear:  
Under God’s wings your refuge,  
God’s faithfulness, your shield.

*Refrain*

You need not fear the terror of the night,  
Nor the arrow that flies by day;  
Though thousands fall about you,  
Near you it shall not come.

*Refrain*

For to his angels he’s given a command  
To guard you in all of your ways:  
Upon their hands they will bear you up,  
Lest you cast your foot against a stone.

**Moment for Mission 11am**

Brett Cayer

**Joys and Concerns**

*Believing that each joy and/or concern expressed is indeed a prayer,  
After each expression, the worship leader will say: Lord in your Mercy.  
And the people may respond: Hear our prayer.*

**Lord’s Prayer**

paraphrase by Sarah Dylan Breuer

Loving Creator, we honor you,  
and we honor all that you have made.  
Renew the whole world  
in the image of your love.  
Give us what we need for today,  
and a hunger to see the whole world fed.  
Strengthen us for what lies ahead;  
heal us from the hurts of the past;  
give us courage to follow your call in this moment.  
For your love is the only power,  
the only home, the only honor we need,  
in this world and in the world to come.  
Amen.



**Emmaus Choir**

Emmaus Homes has provided services to men and women with developmental disabilities for nearly 115 years. Today, approximately 325 people receive services on Emmaus’ two campuses in St. Charles and Marthasville, Missouri, as well as in five counties throughout eastern Missouri. Through a variety of residential and programming options, staff members work with clients to help them reach their highest levels of physical and social independence.

Today we welcome the Emmaus Choir during our 11am worship service and a potluck lunch at noon. You’re invited to gather for fellowship and food with us and meet the Emmaus Choir.

**Moment for Mission**

Today’s Mission Moment celebrates the participation of Scouts in Outreach Programs. One of the focuses of Scouting is to guide young people as active participants in the wider community. A large portion of this practice is developed through volunteer projects. In addition to Boy Scouts of America projects, service hours dedicated to their school, church, or community are encouraged throughout the Scouting experience.

## Sharing our Prayers

We pray for...

Peter and Ruthild Kronberg  
608 Bacon Ave 63119

Dick and Ann Spiering  
31 North Old Orchard B2  
St. Louis MO 63119

Trudy Guinther and  
her daughter Chelsea  
420 W. Swon Ave 63119

Barry and Pat Kurre  
1014 Curran 63122

Judy Walters  
2836 Raritan 63119

Donna Smith,  
Lisa Smith's Mother

Those who have lost jobs

## Sharing our Gifts

During our Procession to the Table (8:30am) and Celebration of Giving (11:00am), we are invited to consider our offerings. The easiest way to make a financial offering is to drop check or money, marked clearly for EUCC or for special offerings, in the basket during worship. You can also set up electronic giving, which saves paper—and you never need your checkbook. See Leslie in the office for details.

## Offerings in Brief

Gifts thru 1/25\*      \$20,911  
Amount needed      \$27,400  
for the period

Amount needed each week to achieve the Basic Budget is \$6,850.

\*Figure includes envelope giving and loose offerings.

Table Fellowship 8:30am

### Invitation

### Remembrance and Blessing

Come, Holy Spirit, come.

Bless this bread and bless this fruit of the vine.

Bless all of us in our eating and drinking

that our eyes might be opened,

that we might recognize the risen Christ in our midst indeed, in one another.

Come, Holy Spirit, come.

*The Congregation is invited to come forward by the center aisle...  
partaking of the bread and cup,  
placing an offering in the plates beside the table,  
lighting a prayer candle on the altar...*

Celebration of Giving 11:00am

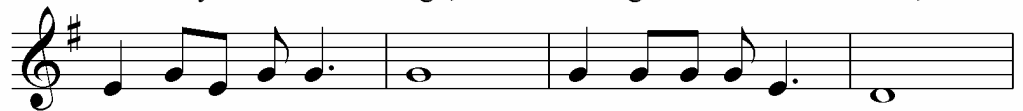
*The congregation is invited to share gifts for our shared ministry.*

\*Response "This Little Light of Mine" words/tune: traditional

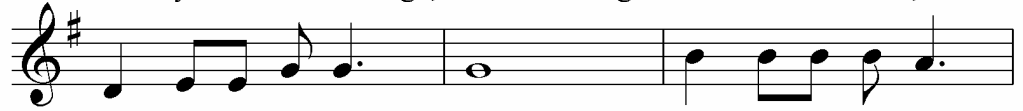
### \*Prayer of Dedication



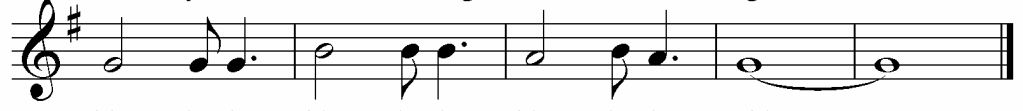
This lit-tle light of mine, I'm gon-na let it shine;  
Ev - 'ry\_\_ where I go, I'm gon-na let it shine;



this lit-tle light of mine, I'm gon-na let it shine;  
ev - 'ry\_\_ where I go, I'm gon-na let it shine;



this lit - tle light of mine, I'm gon-na let it  
ev - 'ry\_\_ where I go, I'm gon-na let it



shine, let it shine, let it shine, let it shine.\_\_\_\_  
shine, let it shine, let it shine, let it shine.\_\_\_\_

One: Creating God,  
we see your creative energy in the wonder of our diversity.  
Our genders, races, and orientations;  
our social classes, ethnicities and creeds;  
our differing physical and mental health and abilities  
all give witness to your Spirit dancing among us.

Many: May our ribbons hang in solidarity  
with those excluded because of gender.

One: May the ribbons we hang in celebration further our commitment  
to embracing your boundless presence in our midst.

Many: Amen.

\*Hymn 539 "Won't You Let me Be Your Servant" tune/words: Gillard



1&6 Won't you let me be your ser - vant,  
2 We are pil - grims on a jour - ney,  
3 I will hold the Christ - light for you  
4 I will weep when you are weep - ing;  
5 When we sing to God in heav - en



let me be as Christ to you? Pray that I may  
we are trav - elers on the road; We are here to  
in the shad - ow of your fear; I will hold my  
when you laugh, I'll laugh with you. I will share your  
we shall find such har - mo - ny, Born of all we've



have the grace to let you be my ser - vant, too.  
help each oth - er go the mile and bear the load.  
hand out to you, speak the peace you long to hear.  
joy and sor - row till we've seen this jour - ney through.  
known to - geth - er of Christ's love and ag - o - ny. *(Repeat verse 1)*

\*Benediction

\*Postlude

## A word about the Rainbow Fish Tree...

In the wake of Matthew Shepard's murder in 1998 and the hateful display by groups calling themselves Christian, members and friends of EUCC sought to respond by challenging ourselves to become a more embracing, inclusive, and diverse community.

The Rainbow Fish symbol incorporates two important symbols. The fish is the ancient Christian symbol used in a time and place when Christianity was a persecuted minority, challenging us to remember that many within the body of Christ are still persecuted. The rainbow is the modern symbol for inclusivity and also the biblical sign of promise that God will never forsake us.

As we begin each new year in the season of Epiphany, we place a rainbow fish on our Christmas tree and hang ribbons each week in a commitment to becoming a more embracing, inclusive and diverse community.



Sources for words, images, and music are noted where available. Permission to reprint music and words from sources other than The New Century Hymnal is granted under OneLicense.net, license no. A-704973.

## Capital Campaign Update

The Capital Campaign Committee would like to thank the congregation for their affirmation of the Master Plan at the Annual Meeting. This Master Plan will serve as the 'vision' for the facilities for the next few years.

The Campaign Committee is pleased to report that of the 105 members present, 82.6% supported the motion to conduct a Capital Campaign beginning in March. As a result of this favorable vote, the Campaign Committee is preparing for the actual campaign by

- Completing a contract with the Campaign Consultant, Bea Stoner;
- Identifying leadership for the Campaign to be approved by the Governing Body next week and;
- Establishing the campaign schedule with the consultant.

The current Capital Campaign Committee will transition into two committees, a *building committee* that will oversee the Master Plan, define the initial phase components based on the campaign pledge results and oversee construction and a *capital campaign* committee that will oversee the steps necessary to conduct a successful capital campaign.

While all of the current Capital Campaign Committee members will be continuing with the process, taking on different roles, we would like to thank each of them for their contributions to get us this far. Through no small effort, they have provided us with a great vision of how our facility can represent how "God is still speaking" among us. Thank you! Laura Bardelmeier, Gary Boehnke, Katy Hawker, Wynn Miller, Bob Risk, Al Schon, Marilyn Stavenger and Jill Thompson

The Capital Campaign Committee pledges to provide regular and frequent updates on activities and progress of the Capital Campaign. If you are interested in serving on any of the committees, we will provide you with that opportunity in early March. We would like as many to be involved in the process as possible!

Finally, we were all inspired by you! By your faith, your trust and your enthusiasm! What a great congregation! We feel privileged to serve you in this endeavor!

## Valentines Outreach Continues Today and Next Week!

You can show your love by:

- Purchasing baked goods at the Bake Sale to benefit Lydia's House—today!
- Make or buy a Valentine at the sale to raise funds for Church World Service. For a donation of \$5.00, you may purchase a handmade card or make one of your own with our extensive array of craft supplies—today!
- Bringing new socks and/or underwear (any size, men's, women's and children's) for the homeless ministry at Centenary United Methodist Church in downtown St. Louis. (See details in News & Notes)—today and next week!



### Spectrum at EUCC

Sunday, February 15 2:00 pm

Spectrum Music Series, music of Vivaldi, Mozart, Paul Jeanjean.

St. Louis native Drew Thompson will be performing on bassoon, Vera Parkin on piano.

\$10 adults children/students free, reception follows.  
For more information, [www.noteworthyonline.net](http://www.noteworthyonline.net),  
314.913.5579

## Spring Yoga Class

Plan to join us for another 8 sessions of yoga on Saturday mornings from 9-10:30 am in the Narthex beginning February 21<sup>st</sup>. The classes are free of charge and will be led by Amy Soell, our very own a certified yoga instructor. Beginners are welcome. Please bring a yoga mat and a small blanket. A sign-up sheet is in the Narthex.

## Circle of Healing for Body Mind and Spirit

The Circle of Healing is a group of skilled caregivers from EUCC and Sts. Clare and Francis who desire to offer their talents in service to our two communities in order to support the well being of our church members in a holistic way. On Monday, February 23<sup>rd</sup>, from 7-8pm and from 8-9pm the Circle of Healing will offer individual sessions of Healing Touch, Counseling/EMDR, Active Listening and Spiritual Direction. There is no cost for this ministry; however free-will donations to your favorite cause is encouraged. Each person has the option to see any of the practitioners up to a total of three visits. Space is limited and sign-ups are required. If you would like to reserve a space privately or if you have any questions about the modalities offered please contact Lisa von Stamwitz at 314-795-0114.

## Eagle Watching—next Saturday!

We will meet at the church at 10:00am and carpool to Clarksville, Mo for lunch, eagles and browsing the shops in town before heading home. Anyone who wants to go should be at the church by 10:00am.

## Pastor's Sabbatical Time

In lieu of a 10 week sabbatical, Katy reserves the two weeks each year following the congregational meeting for writing and reading. She will be out of the office until February 16. Our incredible staff team will cover needs as they may arise.

## New to EUCC?

We welcome new friends (and old!) to join us for discussion and fellowship on Feb 15 at 9:45am in Katy's office. New members will be welcomed in worship on Feb 22! For information about joining, please talk to Pastor Hawker or to Leslie in the church office.

## Unnatural Causes

We will be starting the second half of the Adult Education class "Unnatural Causes" sponsored by the Health Ministry Team on Sunday, March 1<sup>st</sup> from 9:45-10:45am in Katy's office. If you are interested in social justice issues and how social systems within our society that foster discrimination, poverty, and a sense of "futurelessness" impact health and wellness, then join us for this provocative DVD and a lively discussion on the first and third Sundays of the month. Our first the segment called "Bad Sugar" researches why a particular group of Native Americans in Arizona have possibly the highest rate of diabetes in the world when a century ago it was virtually unknown among these people.

## Hungry People

There are hungry people right here in St. Louis who can use your help, either joining us downstairs between services to make sandwiches or bringing canned goods for the Yellow Bag ministry in the grocery cart in the Narthex. Pick up a suggested menu for the yellow bags or bring in whatever is on special this week at your favorite grocer. Hungry people thank you!

## Women's Retreat

Women are invited to join a retreat on March 27-28 for a welcome change of pace with relaxing, contemplating, conversing, listening, story-sharing, laughing, creating, giving, letting go, and receiving.

As we journey together we will explore ways of listening to ourselves, our God, and to others. Sign up and find more information in the Narthex.

## TODAY at EUCC

During our Education Hour:  
Church School & Youth Classes

Coffee Fellowship

Servant Team Meeting

Also today:  
Youth Band—noon  
Youth Group—6pm

## This Week at EUCC

Capital Campaign Meeting—  
Wednesdays at 6:30pm

Children's Choir Rehearsal—  
Wednesdays at 6:30pm

Chancel Choir Rehearsal—  
Thursdays at 7:30pm

## Next Sunday at EUCC

New Member Info—9:45am

## Upcoming for Youth Group

Tonight, 6-8pm:  
We will be creating Valentine's Day cards for our home-bound members.

February 15, time TBD:  
We are baking cookies then delivering them to our home-bound members.

February 22:  
Laser tag! 12 - 5. Permission slips and more detailed information will follow in the near future.

## Sunday Morning

### Shared Ministry Opportunities — Signups are in the Narthex

Ministry		Today	Next Week
Liturgists	Read the Morning Scripture and Prayers	Phiwa Langeni (8:30am), open (11am)	Al Schon (both)
Shepherds	Assist Phiwa with Preschool Playtime (11:00am service)	open	open
Crib Room Assistants	Help Carole play with our babies (two shifts)	Marlene McCarthy, Sandy Bowe	Jan Ittner, Linda Kolley
Ushers	Greet worshippers and (at 11:00am) collect offering	Edna Huitt and Gladys Bradley, Gigi and Bob Hill, Cheryl Palmer and Janet Rundquist	Teri Hillen, Sarah Webster, Linda Kolley, Jan Ittner, Steve Bardelmeier, Joe Ulrich
Coffee Hour	Provide finger foods and greet community between services	Julianne Smutz	open
Money Counters	Count the weekly offerings and enter into database	Brenda Detrick, Don Hubatka	Bob and Gigi Hill

#### Pastoral Team

Katherine Hawker,  
Marilyn Stavenger, Al Schon

#### Music Team

Donita Bauer,  
Jill Thompson, Darcy Swanson

Parish Nurse, Lisa Von Stamwitz

Student, Nancy Mack

Youth, Phiwa Langeni

Education, Sue Schindel

Sunday AM, Carolyn Held

Nursery, Carole Janssen

Campus Minister at Webster, Laurel Hayes

Administration, Leslie Evans

President, Laura Bardelmeier

Secretariat, Erik Soell

Financial, Ken Ulmer

Facilities, Wynn Miller

People Team, Debbie Gregg

Community, Patty Pelikan, Janet Rundquist

Servant, Sean Bryant, Laura Evans

Worship, Margie West, David Faulkner

Endeavoring to maintain the unity of the Holy Spirit in the bond of peace, we are open to and affirming of each child of God, recognizing that we are called to be as one reconciled Body with members of every race, gender identity, ethnic origin, sexual orientation, class, age and physical or mental health and ability.

Evangelical United Church of Christ  
204 E. Lockwood Webster Groves, MO 63119  
314-968-1727

