

# Evangelical UCC CELEBRATION SUNDAY

...Reflections on a Year of our Journey Together...

## 01 FEBRUARY 2009

**8:30AM CENTERING WORSHIP**

with Communion

**9:45AM WORSHIPFUL MEETING**

begins in the Sanctuary

Beginning with a Call to Worship, followed by a Call to Order, worship and meeting will be woven into one experience which will begin with our Education Hour (9:45am), *continue through our second worship hour*, and close at noon.

Church School classes (9:45am-11:00am) will be held for Preschool and Elementary ages followed by a story/play time (11:00am to noon). Nursery care will be provided throughout the morning.

**12NOON POTLUCK LUNCHEON**

in the Fellowship Hall



Rick Cummings, Red Vest Photography

Used with permission of photographer

## Welcome!

### A word about diversity:

We strive to be a safe place for all people to worship regardless of race, creed, age, cultural background, sexual orientation or gender identity.

### A word about children:

We love children, babies, and teens and we welcome all ages to share worship with us. Professional childcare is available throughout the morning for those who prefer. Activity folders (available in the Narthex) allow children of all ages to respond creatively to worship. A playtime for preschool age children is offered after the Chancel Steps at the 11:00 a.m. service.

### A word about special needs:

Signing our 11:00am service this morning are Kristine Pudlowski and Nancy Medearis. Special seating is available as needed. We are happy to provide transportation to worship and special activities. Please let us know how we can help make this worship experience more accessible.

Sources for words, images, and music are noted where available. Permission to reprint music and words from sources other than The New Century Hymnal is granted under OneLicense.net, license no. A-704973.

\*An asterisk next to a section means that we stand for this part of the service as we are able.

## Centering Worship begins at 8:30am

### Welcome and Announcements

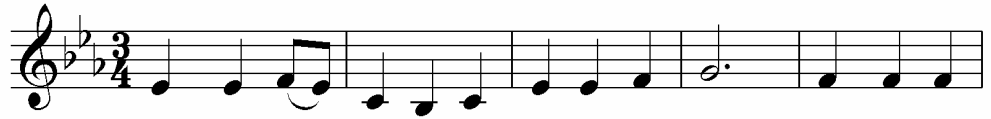
#### Prelude

#### Gathering Prayer (page 4)

#### \*Hymn

"Wake Now My Senses"

tune: Slane  
Mikelson



Wake, now, my\_ sens-es and hear the earth call;    Feel the deep  
Wake, now, my\_ vis-ion of min-i-stry clear;    Bright-en my



pow-er of be-ing in all;    Keep, with the\_ web of cre-  
path-way with ra-di-ance here;    Min- gle\_ my\_ call-ing with



a - tion your vow,    Giv - ing, re -  
all who will share;    Work toward a



ceiv - ing as\_ love shows us how.  
plan - et trans - formed by our care.

#### \*Litany

One: We call on the power of God to meet us in our helplessness:

Many: God in our thinking, God in our speaking,

One: We call on the clarity of God to meet us in our confusion:

Many: God in our acting, God in our stillness.

One: We call on the mercy of God to meet us in our brokenness:

Many: God in our waking, God in our sleeping,

One: We call on the Spirit of God to meet us in our division:

Many: God in our meeting, God in our parting.

- The Iona Community Worship Book

#### \*Response (page 5)

"Siyahamb"

tune: S. African trad.

## Chancel Steps

*Children are invited to come to the Chancel Steps to share a story.  
Following the story, young children may choose  
to go to the nursery (both services)*

## Special Music

"Joy in the Journey"  
Denise Stookesbury

Michael Card

## Scripture and Meditation

### \*Hymn (page 8)

"Faith, While the Trees "

words: Fred Kaan  
tune: Servant Song

## Joys and Concerns

*Believing that each joy and/or concern expressed is indeed a prayer,  
After each expression, the worship leader will say: Lord in your Mercy.  
And the people may respond: Hear our prayer.*

## Lord's Prayer

Loving Creator, we honor you,  
and we honor all that you have made.  
Renew the whole world  
in the image of your love.  
Give us what we need for today,  
and a hunger to see the whole world fed.  
Strengthen us for what lies ahead;  
heal us from the hurts of the past;  
give us courage to follow your call in this moment.  
For your love is the only power,  
the only home, the only honor we need,  
in this world and in the world to come.  
Amen.

## Table Fellowship

### Invitation, Remembrance and Blessing

*The Congregation is invited to come forward by the center aisle...  
partaking of the bread and cup,  
placing an offering in the plates beside the table,  
lighting a prayer candle on the altar...*

### \*Response

"This Little Light of Mine"

words/tune: traditional

verse 1. This little light of mine, I'm gonna let it shine...  
verse 2. Everywhere I go, I'm gonna let it shine...

### \*Prayer of Dedication (page 10)

### \*Hymn (page 7)

"God is Still Speaking"

words/music: Dosia Carlson

### \*Blessing

### \*Postlude

## Praying our Story

Prayer:

Be still and know, that I am God.

Sacred Text:

*These are the generations of the heavens and the earth when they were created, on the day that the Lord God made earth and heaven.*

Prayer:

Be still and know, that I am God.

Sacred Text:

*Now no tree of the field was yet on the earth, neither did any herb of the field yet grow, because the Lord God had not brought rain upon the earth, and there was no man to work the soil. And a mist ascended from the earth and watered the entire surface of the ground. And the Lord God formed man of dust from the ground, and He breathed into his nostrils the soul of life, and man became a living soul.*

Prayer:

Be still and know, that I am God.

Sacred Text:

*And the Lord God planted a garden in Eden from the east, and He placed there the man whom He had formed. And the Lord God caused to sprout from the ground every tree pleasant to see and good to eat, and the Tree of Life in the midst of the garden, and the Tree of Knowledge of good and evil.*

Prayer:

Be still and know, that I am God.

Sacred Text:

*Now the Lord God took the man, and He placed him in the Garden of Eden to work it and to guard it. And the Lord God commanded man, saying, "Of every tree of the garden you may freely eat. But of the Tree of Knowledge of good and evil you shall not eat of it, for on the day that you eat thereof, you shall surely die."*

Worshipful Meeting Begins  
at 9:45am

Welcome and Announcements

Prelude

Gathering Around the Tree

Sacred Text

*These are the generations of the heavens and the earth when they were created, on the day that the Lord God made earth and heaven.*

Response

words/music: John Bell, Iona

Be still and know, that I am God.

Be still and know, that I am God.

Call to Order and Establishment of Quorum

Gathering Prayer

In the beginning, darkness covered the face of the deep.

Then the rushing –breath of life hovered over the waters.

Let us breathe together.

Let us catch our breaths from the need to make, to do.

Let us be conscious of the breath of Life.

We breathe out what the trees breathe in.

We breathe in what the trees breathe out.

Together we breathe each other into life.

Blessed is the One within the many.

Blessed are the Many who make one.

Arthur Waskow, "Life Prayers"

\*Hymn

"Wake Now My Senses"

tune: Slane  
words: Mikelson

Wake, now my reason, reach out to the new;

Join with each pilgrim who quests for the true

Honor the beauty and wisdom of time;

Suffer thy limit, and praise the sublime.

Wake, now, compassion, give heed to the cry;

Voices of suffering fill the wide sky;

Take as your neighbor both stranger and friend,

Praying and striving their hardship to end.

Wake, now, my conscience, with justice thy guide

Join with all people whose rights are denied;

Take not for granted a privileged place;

God's love embraces the whole human race.

Wake, now, my vision of ministry clear;

Brighten my pathway with radiance here;

Mingle my calling with all who will share;

Work toward a planet transformed by our care.

Abbi Arthur Waskow, Ph. D., founded (in 1983) and directs The Shalom Center, a prophetic voice in Jewish, multi-religious, and American life that brings Jewish and other spiritual thought and practice to bear on seeking peace, pursuing justice, healing the earth, and celebrating commu-

The Tree of Life

For our ancestors, trees were not merely natural objects, they were majestic signs of the connectedness of the heaven and the earth. They saw the pattern of the immense root system that bound the tree to the earth, and then above it that immense system of arms and branchlike leaves stretching out into the sky above, and the trunk itself standing there so strongly, the axis that bound the underworld with the upperworld, the human with the divine, the earthly with the spiritual, the world itself with God.

Esther DeWaal  
*The Celtic Way of Prayer*



<http://www.kelticdesigns.com/Media/WebLogos/TreeofLifeByJenDelythN.gif>

**\*Sharing our Mission, Values, and Vision**

As a congregation, we have adopted a Mission:  
**Following the God**  
 made known in the life and teachings of Jesus,  
 we at Evangelical United Church of Christ gather  
 as an **Open and Affirming** community  
 to worship, learn and serve.

Celebrating the Values embodied in Jesus' ministry,  
 we name that for which we strive:  
**Inclusiveness** in our diversity,  
**Intentionality** in our commitment to social justice,  
**Intimacy** in our fellowship together,  
**Inspiration** in our communal worship and  
**Inquisitiveness** in our personal spiritual growth.

From our Mission and Values, our Vision emerges:  
**We desire to be a leader**  
 in helping the wider community affirm  
 that God is still speaking.

**\*Response** "Siyahamb" tune: S. African trad.  
 We sing the South African text, the English, and then return to the South African.

(Phonetic Text) 1. See yah hahm — buh koo kahn  
 (English) 2. We are march - ing in the

yen kwen kohs, see yah hahm buh koo kahn yen kwen kohs.  
 light of God, we are march - ing in the light of God.

— See yah hahm buh — Oo, — see yah  
 — We are march - ing — Oo, — we are

hahm buh koo kahn yen kwen kohs. —  
 march - ing in the light of God. — (Repeat v.1)

*Planting Trees and Sowing Seeds,*  
 Fred Kaan

Were the world to end tomorrow,  
 would we plant a tree today?  
 Would we till the soil of loving,  
 kneel to work and rise to pray?

Pray that at the end of living,  
 of philosophies and creeds,  
 God will find the people busy  
 planting trees and sowing seeds.



"Tree of Life" - <http://www.kosmic-kabbalah.com>

## Celebrating the Fruit of the Tree

### Sacred Text

Now no tree of the field was yet on the earth, neither did any herb of the field yet grow, because the Lord God had not brought rain upon the earth, and there was no man to work the soil. And a mist ascended from the earth and watered the entire surface of the ground. And the Lord God formed man of dust from the ground, and He breathed into his nostrils the soul of life, and man became a living soul.

### Response

words/music: John Bell, Iona

Be still and know, that I am God.

Be still and know, that I am God.

### Presentation of 2008 Program

Team Leaders will each share a sentence of celebration.

### Presentation of Goals for 2009 and Beyond

#### Goal: Reaching Out

Be a spiritual resource for people of the Christian faith in the metro St. Louis area who are searching for a safe, faith-based community with diverse ideas, people, and programs.

#### Strategies:

- Revisit the name by which we will be called to honor our history and consider the implications of the changed definition of the word, "evangelical."
- Communicate who and what we are to the metro St. Louis area.
- Improve openness to guests and shared-space partners through our facilities, hospitality practices, and programs.
- Concentrate our participation in metro St. Louis area events and endeavors to complement our ministry.

#### Goal: Tending Within

Enhance our ministries to support our faith community in hearing and responding to the still speaking God.

#### Strategies:

- Ensure our programs and facilities support the spiritual and fellowship needs of our members and friends.
- Expand our understanding of truly welcoming everyone and its impact on our ministries, embracing our denomination's effort toward "extravagant welcome."
- Prioritize, fund, and perform facility maintenance and capital projects with an emphasis on accessibility and caring for the environment.

### Anthem

"Ours the Journey"

Mark Miller

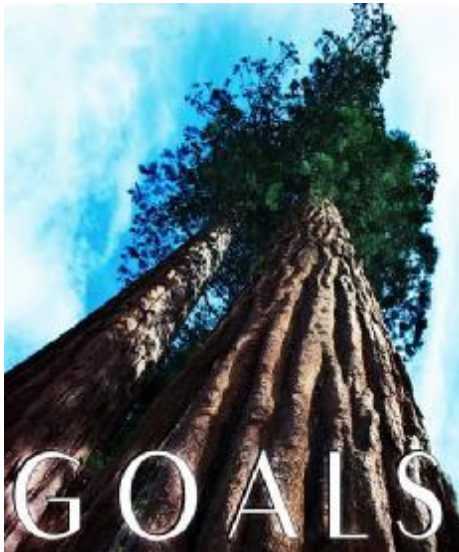
Chancel Choir, Congregation and Instrumental Ensemble

Many: Should the threat of dire predictions cause us  
to withdraw in pain,

May your blazing phoenix spirit  
resurrect the church again.

God of rainbow, fiery pillar, leading  
where the eagles soar,

We your people, ours the journey, now and ever,  
now and ever, now and evermore.



## Cultivating for a New Season

### Sacred Text

And the Lord God planted a garden in Eden from the east, and He placed there the man whom He had formed. And the Lord God caused to sprout from the ground every tree pleasant to see and good to eat, and the Tree of Life in the midst of the garden, and the Tree of Knowledge of good and evil.

### Response

words/music: John Bell, Iona

Be still and know, that I am God.

Be still and know, that I am God.

### Election of Endowment Trustee

Doug Cormack

### Presentation and Adoption of Financial Plan

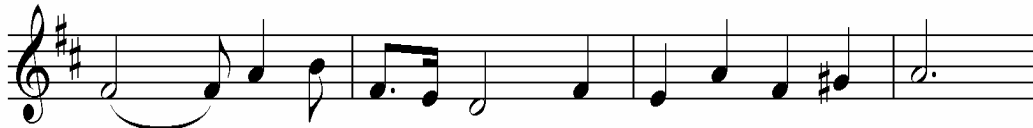
The questions, suggestions and prayers are offered by the congregation. Questions previously placed in the boxes will be addressed.

### \*Hymn

"God is Still Speaking" words/tune: Dosis Carlson



God\_\_\_ is still speak-ing! Are we listen- ing? Are we\_ listen- ing?  
God\_\_\_ is still speak-ing! Are we hear- ing? Are we\_ hear- ing?  
God\_\_\_ is still speak-ing! Are we heed- ing? Are we\_ heed- ing?



God\_\_\_ the Cre - a - torspeaks in var - ied, awe-some ways.  
God\_\_\_ the Re - deem-er speaks with re - con - ci - ling tone.  
God\_\_\_ the Sus - tain - er speaks to com - fort and in - spire.



Thru the splen - dor of a sun - set, thru a ba - by's smil - ing face.  
Thru a moth - er teach-ing kind - ness, thru a pro - phet re - so - lute.  
Thru a neigh - bor who is car - ing, thru a jus - tice- seek - ing friend.



Thru the spar - kle of a dew drop, thru the out - er realms of space,  
Thru the peace-mak - ers,\_\_\_ heal - ers, those who save the des - ti - tute.  
Thru a lead - er who is hope - ful, thru com - pas - sion with - out end.



God\_\_\_ still cre - ates a - new. We\_\_\_ an - swer with our praise.  
God\_\_\_ still re - deems with grace. We\_\_\_ an - swer thru love shown.  
God\_\_\_ still sus - tains us all. We\_\_\_ an - swer with faith's fire.



Copyright © 2008 Cara Dawson

The stories of the Tree of Life cross many cultures, in many forms. Even in Taoist tales, we have a special peach tree that bears a fruit that bestows immortal essence.

In Chinese mythology a carving of a Tree of Life depicts the Phoenix and a dragon. The dragon represents one's essence and the Phoenix the fire of changing but immortal life.

In this drawing I love the image of the leaves becoming butterflies. Butterflies in their transformation are living Phoenix in disguise.

In the fractal pattern of life, we are one with the Tree of Life, the fruit: the seeds of our own change. To eat of oneself: is to partake of the nature -the flesh- of every being. This is the path of growing into our connected nature. Every religion has variations of this tale, be it Christian when one partakes of Christ's flesh or a Taoist biting into the immortal peach.

We live within transformation every day and in this we are part of the Tree of Life.

Copyright © 2005 - 2009 One River LLC.

## Presentation of Capital Campaign Motions

The questions, suggestions and prayers are offered by the congregation. Questions previously placed in the boxes will be addressed.

### Discussion of Master Plan with Vote

"Affirm the Master Plan of \$2.0 million (2008 estimate) which includes organ rebuild/upgrade."

### Discussion of Capital Campaign with Written Ballot

"Approve proceeding with a capital campaign this spring (2009) with a minimum goal of \$830,000 to complete the initial phase of the Master Plan, retire current indebtedness and cover campaign costs and consultant fees."

### \*Hymn

"Faith, While Trees are Still in Blossom" words: Fred Kaan  
tune: Servant Song

Faith, while trees are still in blossom,  
plans the picking of the fruit;  
faith can feel the thrill of harvest  
when the buds begin to sprout.

Long before the dawn is breaking,  
faith anticipates the sun.  
Faith is eager for the daylight,  
for the work that must be done.

Faith believes that God is faithful:  
God will be what God will be.  
Faith accepts the call, responding,  
"I am willing, Lord, Send me."

## Lord's Prayer

Each week in worship we share a version of the prayer that Christians often call "our Lord's Prayer". Two different versions are found in the gospel narratives (Luke 11:2-4 and Matthew 6:9-13). Each new translation renders fresh insight, each musical setting and paraphrase also invites new perspective.

The paraphrase we share this morning is written by Sarah Dylan Breuer who writes, "This was written for services including many unchurched people for whom the language of the Lord's Prayer was not immediately meaningful, but who found this very loose paraphrase resonant in the moment and a means to think about the meaning of Jesus' words and pattern of prayer."

### Tending the Seedling

#### Sacred Text

*Now the Lord God took the man, and He placed him in the Garden of Eden to work it and to guard it. And the Lord God commanded man, saying, "Of every tree of the garden you may freely eat. But of the Tree of Knowledge of good and evil you shall not eat of it, for on the day that you eat thereof, you shall surely die."*

#### Response

words/music: John Bell, Iona

Be still and know, that I am God.  
Be still and know, that I am God.

#### Joys and Concerns

*Believing that each joy and/or concern expressed is indeed a prayer, After each expression, the worship leader will say: Lord in your Mercy. And the people may respond: Hear our prayer.*

#### Lord's Prayer

paraphrase by Sarah Dylan Breuer

Loving Creator, we honor you,  
and we honor all that you have made.  
Renew the whole world  
in the image of your love.

Give us what we need for today,  
and a hunger to see the whole world fed.  
Strengthen us for what lies ahead;  
heal us from the hurts of the past;  
give us courage to follow your call in this moment.  
For your love is the only power,  
the only home, the only honor we need,  
in this world and in the world to come.  
Amen.

## Table Fellowship

### Invitation

### Remembrance and Blessing

Come, Holy Spirit, come.  
Bless this bread and bless this fruit of the vine.  
Bless all of us in our eating and drinking  
that our eyes might be opened,  
that we might recognize the risen Christ in our midst  
indeed, in one another.  
Come, Holy Spirit, come.

*The Congregation is invited to come forward by the center aisle...  
partaking of the bread and cup,  
placing an offering in the plates beside the table,  
lighting a prayer candle on the altar...*

## Communion Songs

"This Little Light of Mine" words/tune: traditional

verse 1. This little light of mine, I'm gonna let it shine...

verse 2. Everywhere I go, I'm gonna let it shine...

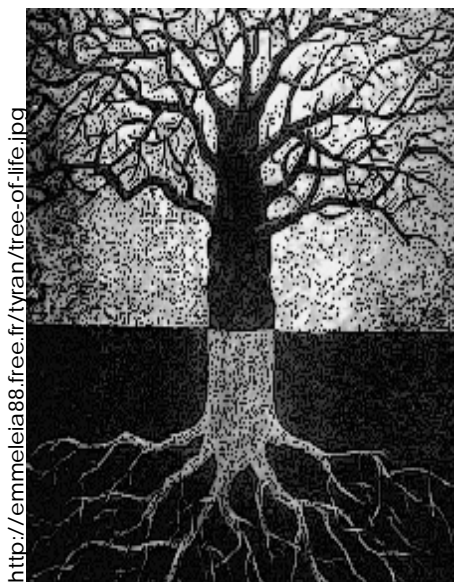
verse 3. All around the world, I'm gonna let it shine...

"Woyaya" words/tune: Art Garfunkel

We are going, heaven knows where we are going,  
We'll know we're there.  
We will get there, heaven knows how we will get there,  
We know we will.

It will be hard we know  
And the road will be muddy and rough,  
But we'll get there, heaven knows how we will get there,  
We know we will.

We are going, heaven knows where we are going,  
We'll know we're there.



<http://emmelcia88.free.fr/tyran/tree-of-life.jpg>

## A word about the Rainbow Fish Tree...

In the wake of Matthew Shepard's murder in 1998 and the hateful display by groups calling themselves Christian, members and friends of EUCC sought to respond by challenging ourselves to become a more embracing, inclusive, and diverse community.

The Rainbow Fish symbol incorporates two important symbols. The fish is the ancient Christian symbol used in a time and place when Christianity was a persecuted minority, challenging us to remember that many within the body of Christ are still persecuted. The rainbow is the modern symbol for inclusivity and also the biblical sign of promise that God will never forsake us.

As we begin each new year in the season of Epiphany, we place a rainbow fish on our Christmas tree and hang ribbons each week in a commitment to becoming a more embracing, inclusive and diverse community.



## Monthly Offering: Back Bay Mission Biloxi, Mississippi

Back Bay Mission, a community ministry of the United Church of Christ, serves the Mississippi Gulf Coast and the wider church community by faithful witness for social justice and compassionate service to the poor and marginalized.

Despite the fact their own buildings were totally destroyed by Katrina, the small dedicated staff of BBM have enlisted the help of 3600 disaster recovery volunteers from all over the country to help rebuild the homes of those they have always served in Biloxi's "back bay". There are no UCC churches in Mississippi; Back Bay Mission counts on us to help sustain their ministries in health care, feeding the homeless, addressing housing issues, protecting women and children from domestic violence, HIV-AIDS outreach, and many more aspects of hands-on care.

Write your check to EUCC and note BBM on the memo line or on the outside of your envelope. Our own Jill Harkins served an intern year at BBM during seminary and if you want a first-hand passionate testimony about its ministry talk to David Harkins!

## Sharing our Gifts

During our Procession to the Table (8:30am) and Celebration of Giving (11:00am), we are invited to consider our offerings. The easiest way to make a financial offering is to drop check or money, marked clearly for EUCC or for special offerings, in the basket during worship. You can also set up electronic giving, which saves paper—and you never need your checkbook. See Leslie in the office for details.

## \*Prayer of Dedication

One: Creating God,  
we see your creative energy in the wonder of our diversity.  
Our genders, races, and orientations;  
our social classes, ethnicities and creeds;  
our differing physical and mental health and abilities  
all give witness to your Spirit dancing among us.

Many: **May our ribbons hang in solidarity  
with those who have pledged to share life  
in this particular community of faith.**

One: May the ribbons we hang in celebration further our commitment  
to embracing your boundless presence in our midst.

Many: **Amen.**

## \*Hymn

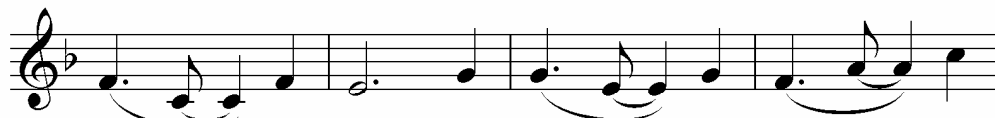
"Blessed Be The Tie That Binds"

Traditional words and tune adapted for EUCC.

Verses 2 and 4 reflect our Vision-Mission-Values and the tempo embodies our spirit.



Blessed be \_\_\_\_\_ the tie \_\_\_\_\_ that binds our hearts \_\_\_\_\_ in  
To find \_\_\_\_\_ a sa - cred peace, in Je - sus'  
We share \_\_\_\_\_ each oth - ers's woes, our mut - ual  
To lead, \_\_\_\_\_ we pray \_\_\_\_\_ for grace; but not \_\_\_\_\_ for



Chris - tian love; The fel - low - ship \_\_\_\_\_ of  
life \_\_\_\_\_ ob - served; We gath - er in \_\_\_\_\_ com -  
bur - dens bear; And of - ten for \_\_\_\_\_ each  
our \_\_\_\_\_ own fame. May our \_\_\_\_\_ em - brace \_\_\_\_\_ ex -



kin - dred minds \_\_\_\_\_ is like \_\_\_\_\_ to  
mun - i - ty \_\_\_\_\_ to wor - ship,  
oth - er flows \_\_\_\_\_ the sym - pa -  
ceed \_\_\_\_\_ this space; \_\_\_\_\_ Still speak - ing



that \_\_\_\_\_ a - bove.  
learn, \_\_\_\_\_ and serve.  
thiz - ing tear.  
God \_\_\_\_\_ pro - claim.

## \*Blessing

## \*Postlude

# Announcements

## Annual Valentine and Bake Sale – Feb. 1 and 8

On the first two Sundays in February, in the shadow of that celebration of love, Valentine's Day, there will be several opportunities for us to show love of neighbors here at church. Please see the details in this week's news & Notes and next week's bulletin.

## New to EUCC?

We welcome new friends (and old!) to join us for discussion and fellowship on Feb 15 at 9:45am in Katy's office. New members will be welcomed in worship on Feb 22! For information about joining, please talk to Pastor Hawker or to Leslie in the church office.

## Trivia Night at Webster-Rock Hill

Webster Rock Hill Ministries is having their annual Trivia Night Fundraiser on Friday, February 6 at 6:30pm at the Richmond Heights Community Center (The Heights). WRHM is charity/assistance center that helps those in need in the Webster Groves and Rock Hill communities, and is supported by several church (including EUCC) working together to make a difference in our community. Let's at least get a group of 8 together. The fee/donation is \$25/person. Let's support this effective and much needed organization. The sign-up sheet is in the Narthex.

## Hungry People

There are hungry people right here in St. Louis who can use your help, either joining us downstairs between services to make sandwiches (that's today!), or bringing in canned goods for the Yellow Bag ministry in the grocery cart in the narthex. Pick up a suggested menu for the yellow bags OR bring in whatever is on special this week at your favorite grocer. Hungry people thank you!!

## Upcoming Worship Notes

Feb 8—Emmaus Choir with Nancy Mack, preaching  
Feb 15—St. Valentine with Marilyn Stavenger, preaching

## Pastor's Sabbatical Time

In lieu of a 10 week sabbatical, Katy reserves the two weeks each year following the congregational meeting for writing and reading. She will be out of the office until February 16. Our incredible staff team will cover needs as they may arise.

## Get My People Going!

You Are What You Drink

When God parted the waters of the Red Sea through the actions of Moses, he opened a whole new world to the Hebrew people. Water gave them new life! Did you know that about half of each of your trillions of cells is simply water? Your body also has water between the cells and in your blood, making our bodies around 60% water. You are constantly losing water, though, through breathing, going to the bathroom, and through sweating. When you exercise, you lose that water even faster. So, be sure you stay hydrated by drinking plenty of pure, clean water every day – most sources recommend around eight 8-ounce glasses of fluids each day. But don't drink them all at once! Some folks are already making great strides toward their goals others of us are just getting started but no matter where you are on the journey be sure to check in with your companion and for moral support or to celebrate a success. We are all in this together. If have any questions or need more information please contact me (Lisa) at 795-0114.

## TODAY at EUCC

Congregational Meeting—See schedule on cover  
Youth Group—6pm

## This Week at EUCC

Job jar Gang—1st & 3rd Mondays at 9am

Capital Campaign Meeting—Wednesdays at 6:30pm

Children's Choir Rehearsal—Wednesdays at 6:30pm

Quilters & Crafters—Wednesday at 7pm in Fellowship Hall

Chancel Choir Rehearsal—Thursdays at 7:30pm

## Next Sunday at EUCC

Servant Team Meeting—9:45am

New Member Info—9:45am

## Upcoming for Youth Group

Tonight February 1, 6-8pm:  
Board game night! Bring board games or come play some.

February 8, 6-8pm:  
We will be creating Valentine's Day cards for our home-bound members.

February 15, time TBD:  
We are baking cookies then delivering them to our home-bound members.

February 22:  
Laser tag! 12 - 5. Permission slips and more detailed information will follow in the near future.

Sunday Morning  
 Shared Ministry Opportunities — Signups are in the Narthex

Ministry		Today	Next Week
Liturgists	Read the Morning Scripture and Prayers	Open (8:30am), Jim Herz (11am)	open
Shepherds	Assist Phiwa with Preschool Playtime (11:00am service)	open	open
Crib Room Assistants	Help Carole play with our babies (two shifts)	Teri Hillen, Marie Keath	Marlene McCarthy, Sandy Bowe
Ushers	Greet worshippers and (at 11:00am) collect offering	David Faulkner, Sandy Bowe, Geno and Lola Contestabile	Gigi and Bob Hill
Coffee Hour	Provide finger foods and greet community between services	open	Julianne Smutz
Money Counters	Count the weekly offerings and enter into database	Norma Leuthauser, Bobbie Pahmeier	Brenda Detrick, Don Hubatka

Pastoral Team  
 Katherine Hawker,  
 Marilyn Stavenger, Al Schon

Music Team  
 Donita Bauer,  
 Jill Thompson, Darcy Swanson  
 Parish Nurse, Lisa Von Stamwitz

Student, Nancy Mack

Youth, Phiwa Langeni

Education, Sue Schindel

Sunday AM, Carolyn Held

Nursery, Carole Janssen

Campus Minister at Webster, Laurel Hayes

Administration, Leslie Evans

President, Laura Bardelmeier

Secretariat, Erik Soell

Financial, Ken Ulmer

Facilities, Wynn Miller

People Team, Debbie Gregg

Community, Patty Pelikan, Janet Rundquist

Servant, Sean Bryant, Laura Evans

Worship, Margie West, David Faulkner

Endeavoring to maintain the unity of the Holy Spirit in the bond of peace, we are open to and affirming of each child of God, recognizing that we are called to be as one reconciled Body with members of every race, gender identity, ethnic origin, sexual orientation, class, age and physical or mental health and ability.

Evangelical United Church of Christ  
 204 E. Lockwood Webster Groves, MO 63119  
 314-968-1727

